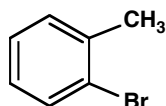


JASPERSE CHEM 350 TEST 4 VERSION 1
 Conjugation, Diels-Alder, Aromaticity, Aromatic Reactions

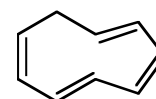
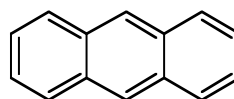
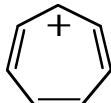
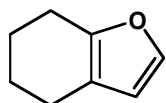
1. Provide the Name or Structure for the Following (7 points)



m-nitroaniline



2. Circle the aromatic molecules (6 points)

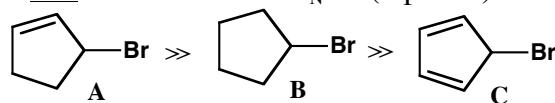


3. Outline the energies of the π -molecular orbitals for benzene, and draw electrons into the orbitals that are occupied. (5 points)

Not Test Responsible this Semester

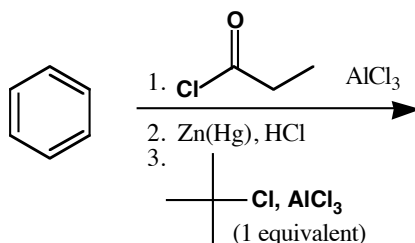
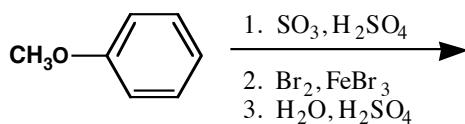
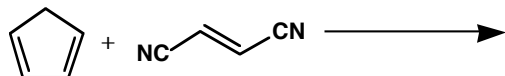
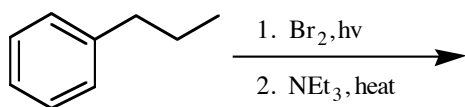
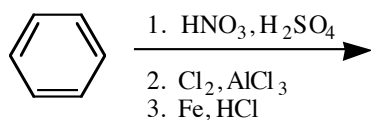
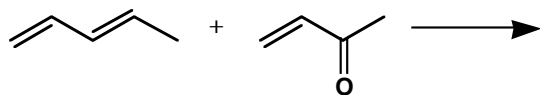
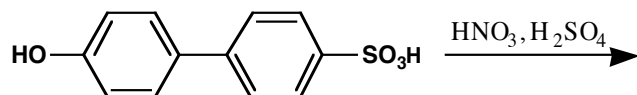
Nonbonding line -----

4. Bromide **B** has normal reactivity (for a 2° bromide) toward S_N1 substitution, but **A** has much higher reactivity and **C** has much lower reactivity. a) Why is **A** more reactive toward S_N1 ? b) Why is **C** much less reactive toward S_N1 ? (4 points)



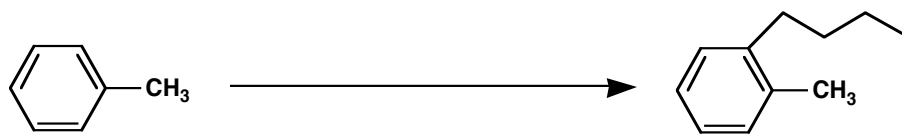
Kinetic reactivity toward
 S_N1 reactivity (H_2O, H^+)

5. Synthesis Reactions. Draw the feature product of the following reactions (need not show any byproducts). (21 points, 3 points each)

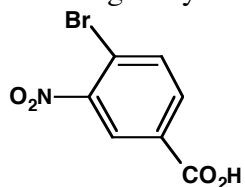


Answer key shows only one, but either of two structural isomers will be accepted. (Carbonyl on either spot 5 or 6)

6. Design sequences for the designated conversions. (5 points each)

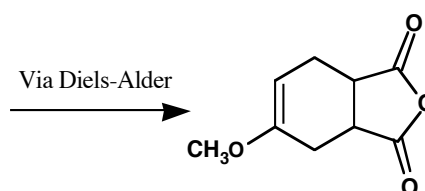
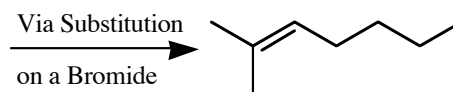


7. Design a synthesis for the following molecule beginning with toluene. (6 points)

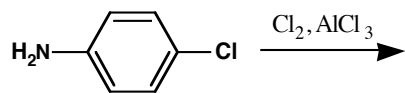


8. Draw the Reactants for the Following (6 points)

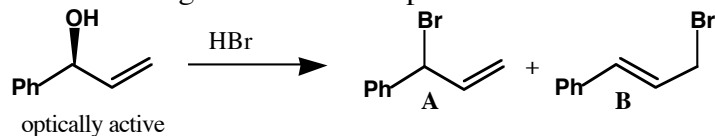
Not Test Responsible this Semester for this Top problem. Problem below, you are responsible.



9. a) Draw the major product for the following reaction, and b) draw the mechanism for its formation. c) Identify the slow step. d) Draw all the resonance structures for the cation intermediate and e) circle the most important contributor. (7 points)



10. (9 points total) a) Draw the mechanism for the following reaction, in which a common intermediate gives rise to both products.



b) In the above reaction, is product **A** chiral or achiral?

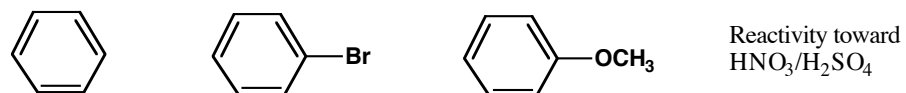
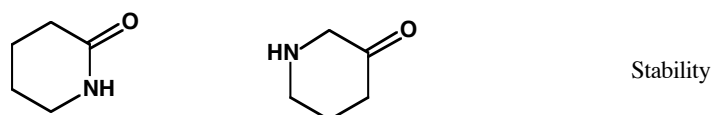
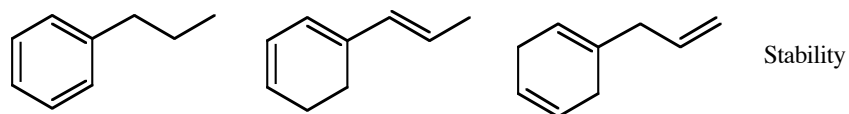
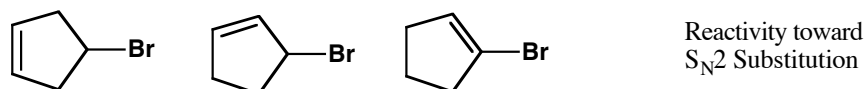
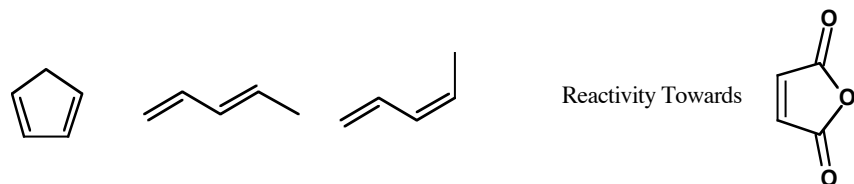
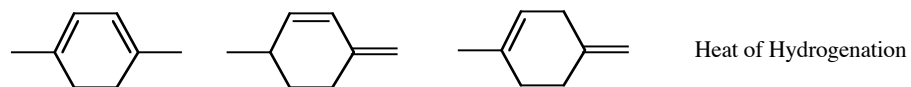
c) Product **A** is formed preferentially at low temperature, but **B** is major when the reaction is conducted at high temperature such that product equilibration occurs. Which is the “thermodynamic” product (more stable, so it builds up under equilibrating conditions) and which is the “kinetic” product (less stable but forms preferentially under non-equilibrating conditions.)

Thermodynamic Control Product:

Kinetic Product:

d) Draw the 2 relevant resonance structures for the key intermediate (or mark them if you already drew both in your mechanism). Circle the one that would make the greater contribution to the resonance hybrid. Why is the “kinetic” product formed preferentially under irreversible conditions?

11. Rank the following, with 1 being highest/most. (2 points each)



12. For each nitrogen in the molecule, classify the hybridization of the nitrogen atom, the hybridization of the nitrogen lone pair, and classify whether the basicity of the nitrogen is “normal” or “low”. (5 points)

	Nitrogen Hybridization	Lone-Pair Hybridization	Nitrogen Basicity
--	------------------------	-------------------------	-------------------

N_a

N_b

N_c

N_d

